



2-3 AMINO ACIDS BEADLETS

4-5 VITAMIN BEADLETS

6-7 MINERAL BEADLETS

8-9 CARATENOIDS BEADLETS

10-15 HERBAL BEADLETS

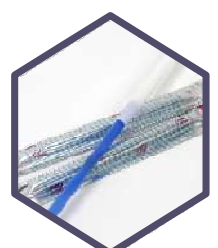
16-17 ACTIVE BEADLETS

16-17 ENZYME BEADLETS

16-17 PROBIOTICS BEADLETS

18-19 SPECIALITY ACTIVES

NUTRACEUTICAL DIVISION



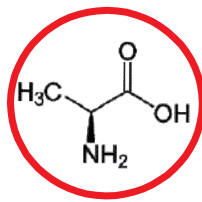
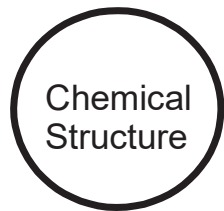


ENCAPSULATED AMINO ACIDS

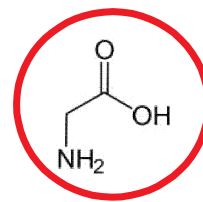
AMINO ACIDS ARE THE BUILDING BLOCKS OF PROTEINS IN LIVING ORGANISMS THERE ARE OVER 500 AMINO ACIDS FOUND IN NATURE-HOWEVER THE HUMAN GENETIC CODE DIRECTLY ENCODES 20. ESSENTIAL AMINO ACIDS MUST BE OBTAIN FROM THE DIET. WHILST NON ESSENTIAL AMINO ACIDS CAN BE SYNTHESIZED IN THE BODY.

Chart key :

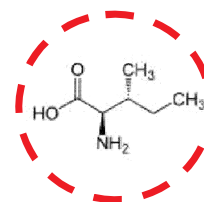
● ALIPHATIC ● AROMATIC ● ACIDIC ● BASIC ● HYDROXYLIC ● SULPHUR CONTAINING ● AMIDIC ○ NON-ESSENTIAL ○ ESSENTIAL



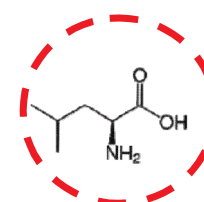
ALANIN



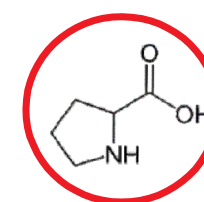
GLYCIN



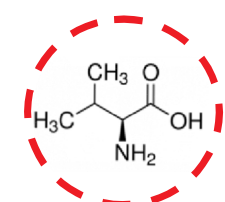
ISOLEUCINE



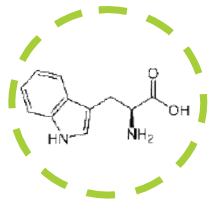
LEUCINE



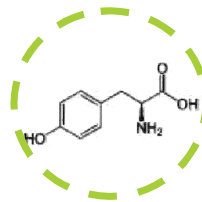
PROLINE



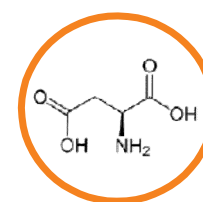
VALINE



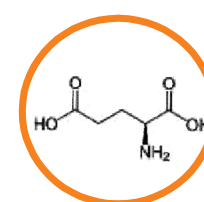
TRYPTOPHAN



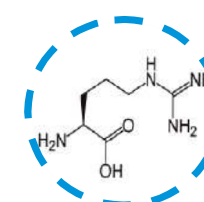
TYROSINE



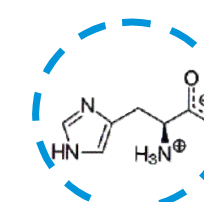
ASPARTIC ACID



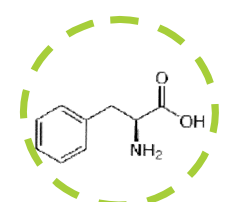
GLUTAMIC ACID



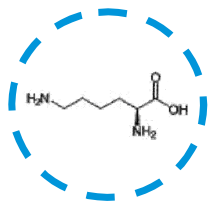
ARGININE



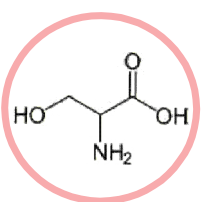
HISTIDINE



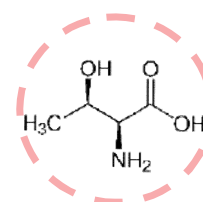
PHENYLALANINE



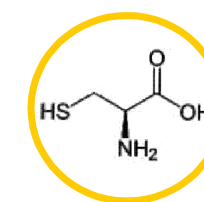
LYSINE



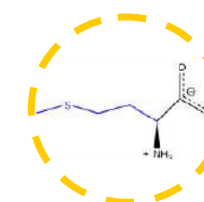
SERINE



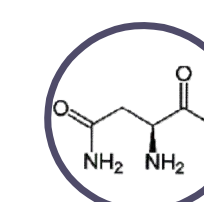
THREONINE



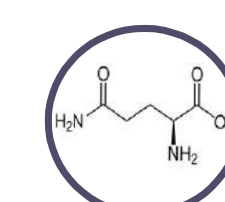
CYSTEINE



METHIONINE



ASPARAGINE



GLUTAMINE

Note: This chart only shows those amino acids for which the human genetic code directly codes for products protected by valid patents are not offered for sale in countries where the sale of such products constitutes patent infringement. availability may be restricted to certain markets or countries.



AMINO ACID BEADLETS



INCREASES ENERGY

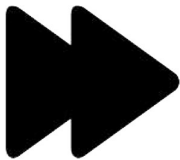
L-Tryptophan Beadlets 50%



LAST 1-4 HOURS

L-Valine Beadlets 40%

Phenylalanine Beadlets 30%



STARTS WORKING QUICKLY

Histidine Beadlets 50%

L-Threonine Beadlets 50%



IMPROVE MUSCLE GROWTH

L-Glutamine Pellets 45%

DL- Methionine Beadlets 55%



IMPROVE MENTAL FOCUS

Branched Chain Amino Acids
(BCAA) Pellet 45%

L-Leucine Beadlets 55%



IMPROVE PERFORMANCE IN SPORTS

Alginate Beadlets 40%

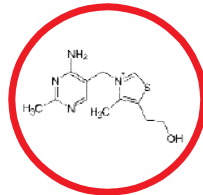
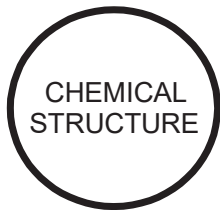


ENCAPSULATED VITAMINS

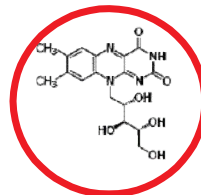
THE HUMAN BODY REQUIRES A VARIETY OF VITAMINS TO KEEP WORKING PROPERLY. THERE ARE TWO TYPES OF VITAMINS: WATER-SOLUBLE AND FAT-SOLUBLE VITAMINS. BOTH TYPES OF VITAMIN ARE IMPORTANT TO THE BODY

Chart key :

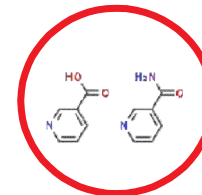
● WATER SOLUBLE ● FAT SOLUBLE



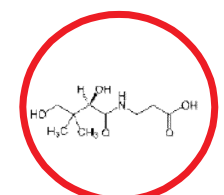
VITAMIN B1 (THIAMINE)



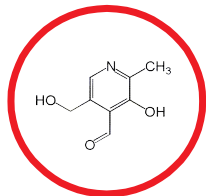
VITAMIN B2 (RIBOFLAVIN)



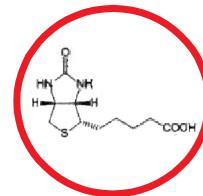
VITAMIN B3 (NIACIN)



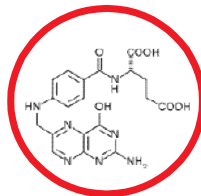
VITAMIN B5 (PANTOTHENIC ACID)



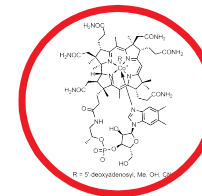
VITAMIN B6



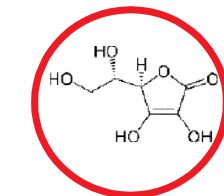
VITAMIN B7 (BIOTIN)



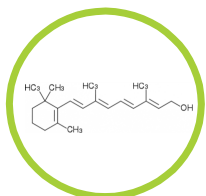
VITAMIN B9 (FOLIC ACID)



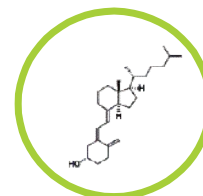
VITAMIN B12 (COBALAMIN)



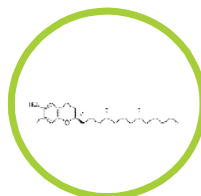
VITAMIN C (ASCORBIC ACID)



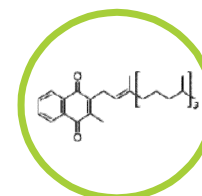
VITAMIN A (retinyl palmitate)



VITAMIN D3 (Cholecalciferol)



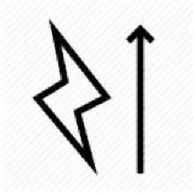
VITAMIN E (alpha-tocopherol)



VITAMIN K



VITAMIN BEADLETS



INCREASES ENERGY



INCREASE BONE HEALTH



INCREASE HEALTHILY GROWTH



INCREASE IMMUNE FUNCTION

Vitamin A Beadlets 50%

Vitamin D3 Beadlets 0.5%,1%

Vitamin E Beadlets 40%

Vitamin C Beadlets 70% ,90%

Vitamin B1 Beadlets 20%

Vitamin B2 Beadlets 10%

Vitamin B3 Beadlets 30%,50%

Vitamin B5 Beadlets 40%

Vitamin B6 Beadlets 10%, 20%

Vitamin B 7 Beadlets 20%

Vitamin B9 Beadlets 2%, 3%,5%

Vitamin B12 Beadlets 3%

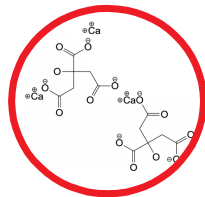
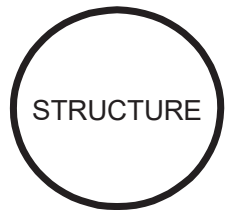


ENCAPSULATED MINERALS

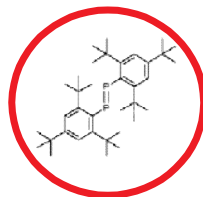
BODY NEEDS MANY MINERALS; THESE ARE CALLED ESSENTIAL MINERALS. ESSENTIAL MINERALS ARE SOMETIMES DIVIDED UP INTO MAJOR MINERALS (MACROMINERALS) AND TRACE MINERALS (MICROMINERALS). THESE TWO GROUPS OF MINERALS ARE EQUALLY IMPORTANT, BUT TRACE MINERALS ARE NEEDED IN SMALL AMOUNTS THAN MAJOR MINERALS.

Chart key :

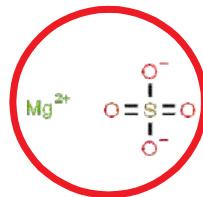
● MACRO MINERALS ● MICRO MINERALS



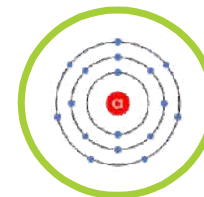
CALCIUM



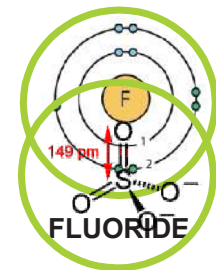
PHOSPHORUS



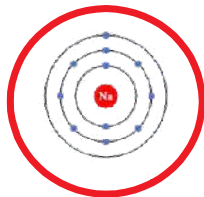
MAGNESIUM



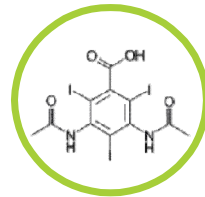
CHLORIDE



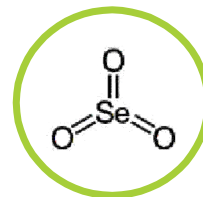
FLUORIDE



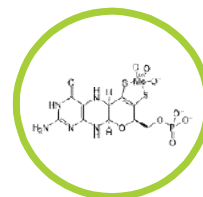
SODIUM



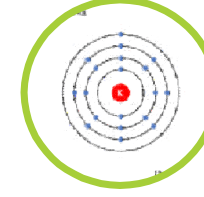
IODINE



SELENIUM



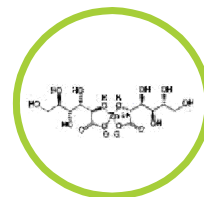
MOLYBDENUM



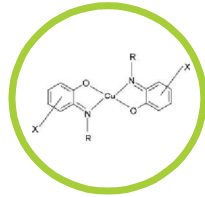
POTASSIUM



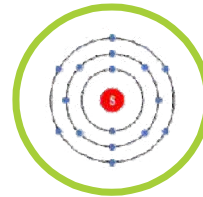
SULPHATE



ZINC



COPPER



SULFUR



MINERAL BEADLETS



BOOST HEALTH



BOOST IMMUNITY



INCREASE BONE HEALTH



HELPS IN BODY METABOLISM



WATER BALANCE

Copper Sulphate Beadlets 1%

Potassium Chloride Beadlets 90% SR

Ferrous Ascorbate Beadlets 20%

Selenium Beadlets 1%

Dried Ferrous Sulphate 65%

Iodine Beadlets 0.5%

Boron Beadlets 2%

Zinc Beadlets 60%

Calcium Beadlets 75%

Ferrous Sulphate Beadlets 65%

Carbonyl Iron Beadlets 60%

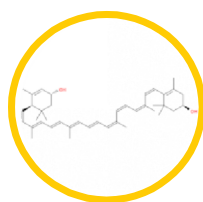
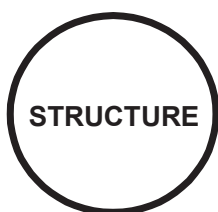
Ferrous Fumarate Beadlets 65%

Magnesium Beadlets 85%

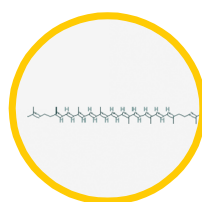


ENCAPSULATED CAROTENOID

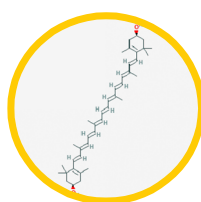
CAROTENOIDS ARE A CLASS OF MORE THAN 750 NATURALLY OCCURRING PIGMENTS SYNTHESIZED BY PLANTS, ALGAE, AND PHOTOSYNTHETIC BACTERIA THESE RICHLY COLORED MOLECULES ARE THE SOURCES OF THE YELLOW, ORANGE, AND RED COLORS OF MANY PLANTS.



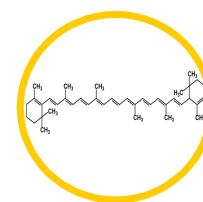
LUTEIN



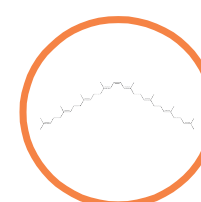
LYCOPENE



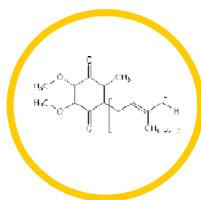
ZEAXANTHIN



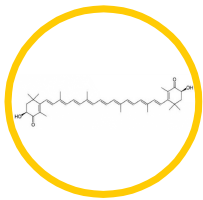
ALPHA-CAROTENE



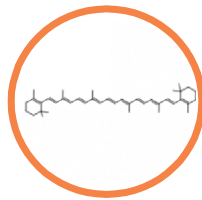
PHYTOENE



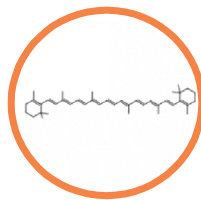
CoQ10



ASTAXANTHIN



BETA-CAROTENE



MIXED CAROTENE



CAROTENOID BEADLETS



CARDIOVASCULAR BENEFITS

**Lutein (Easter /Free) Beadlets
10%, 20%, 25%**



STRENGTH IN IMMUNE SYSTEM

Lycopene Beadlet 5%, 10%, 20%

Zeaxanthin Beadlets 2%, 5%,10%



SKIN AGEING PROTECTION

Astaxanthin Beadlets 2.5%, 3%, 5%

CoQ10 Beadlets 5%,10%



VISION BENIGITS

Beta Caratene Beadlets 10%, 20%

Mixed Caratonoid Beadlets 10%,15%



SKIN CARE PROTECTION



ENCAPSULATED HERBAL

A HERB IS A PLANT OR PLANT PART USED FOR ITS SCENT, FLAVOR, OR THERAPEUTIC PROPERTIES. HERBAL MEDICINES ARE ONE TYPE OF DIETARY SUPPLEMENT.



GOTU KOLA



BERRIES



BILBERRY
(Vaccinium myrtillus)



BITTER MELON
(Momordica charantia)



BLACK COHOSH
(Actaea racemosa)



BLACK CURRENT
(Ribes nigrum)



CAT'S CLAW
(Uncaria tomentosa)



CHASTETREE
(Vitex agnus-castus)



CHICORY
(Cichorium intybus)



CINNAMON
(Cinnamomum verum)



DEVIL'S CLAW
(Harpagophytum)



ELDERBERRY
(Sambucus)



EVENING PRIMORSE
(Oenothera)



GARCINIA CAMBOGIA
(Garcinia gummi-gutta)



GINKGO BILOBA



GINSENG
(Panax ginseng)



GOJI



GOLDENSEAL



ENCAPSULATED HERBAL

A HERB IS A PLANT OR PLANT PART USED FOR ITS SCENT, FLAVOR, OR THERAPEUTIC PROPERTIES. HERBAL MEDICINES ARE ONE TYPE OF DIETARY SUPPLEMENT.



BANABA



GUARANA
(*Paullinia cupana*)



HAWTHORN
(*Crataegus*)



HORNY GOAT WEEDS
(*Epimedium*)



HORSE CHESTNUT
(*Aesculus hippocastanum*)



LICORICE
(*Glycyrrhiza glabra*)



MANGOSTEEN
(*Garcinia mangostana*)



MILK THISTLE
(*Silybum marianum*)



PSYLLIUM
(*Plantago ovata*)



RED YEAST RICE



ROSE HIPS



SAW PALMETTO
(*Serenoa repens*)



VINPOCETINE
(*Oenothera*)



ENCAPSULATED HERBAL

A HERB IS A PLANT OR PLANT PART USED FOR ITS SCENT, FLAVOR, OR THERAPEUTIC PROPERTIES. HERBAL MEDICINES ARE ONE TYPE OF DIETARY SUPPLEMENT.



WITHANIA SOMNIFERA
(Ashwagandha)



CURCUMA LONGA
(Curcumin)



CAPSICUM EXTRACT
(Capsicum Annum)



BOSWELLIA SERRATA
(Boswellia)



ST. JOHN WORT
(Hypericum Perforatum)



HIBISCUS
(CHONDROITIN SULFATE)



FENUGREEK
(Trigonella Foenum-Graecum)



GARLIC
(Allium Sativum)



SAFFRON
(Crocus Sativus)



GINGER
(Zingiber Officinale)



GREEN TEA
(Camellia Sinensis)



AMLA
(Phyllanthus emblica)



CRANBERRY
(Oxycoccus)



BRAHMI
(Bacopa monnieri)



MARIGOLD
(Calendula)



RED CLEVER
(Trifolium Pratense)



DANDELION ROOT EXTRACT
(Taraxacum)



ALOE VERA
(Aloe barbadensis miller)



HERBAL BEADLETS



NATURAL HEALING



STABILISES METABOLISM



HEALING PROPERTY



STRENGTH IN IMMUNE SYSTEM

Withania Somnifera Beadlets 65%
(Ashwagandha)

Curcuma Longa Beadlets 100%
(curcumin)

Capsicum Extract Beadlets 2%, 2.5%,4%,EC

Boswellia Serrata Beadlets 65%
(Boswellia)

Shilajit Beadlets 65%

Fenugreek Beadlets
(Trigonella Foenum-Graecum)

Garlic Beadlets 75%
(Allium sativum)

Saffron Beadlets 25%
(Crocus Sativus)

Ginger Beadlets 75%
(Zingiber officinale)

St.John Wort Beadlets 65%
(Hypericum perforatum)

Echinichea 65%
(Echinacea purpurea)

Cranberry Beadlets 25%
(Oxycoccus)

Brahmi 5%
(Bacopa monnieri)

Marigold 65%
(Calendula)

Hibiscus Beadlet 65%
(CHONDROITIN SULFATE)

Amla Beadlets 65%
(Phyllanthus emblica)

Aleo Vera Beadlets 65%
(Aloe barbadensis miller)



ENCAPSULATED HERBAL

A HERB IS A PLANT OR PLANT PART USED FOR ITS SCENT, FLAVOR, OR THERAPEUTIC PROPERTIES. HERBAL MEDICINES ARE ONE TYPE OF DIETARY SUPPLEMENT.



RHODIOLAROSEA
(Rhodiola Rosea)



BLACK PEPPER
(Black pepper)



YAHIMBINE HCL
(Pausinystalia Johimbe)



LEMON BALM EXTRACT
(Melissa officinalis)



WHITE WILLOW BARK EXTRACT
(Salix Alba)



ROSEMARY
(Rosmarinus officinalis)



YOHIMBE BARK EXTRACT
(Pausinystalia Johimbe)



MUCUNSPRURIENS
(Mucuna Pruriens)



VALERIAN
(Valeriana Officinalis)



CHAMOMILE EXTRACT
(Matricaria Chamomilla)



DANDELION ROOT EXTRACT
(Taraxacum)



YLANG YLANG
(Cananga odorata)



BITTER ORANGE FRUIT EXTRACT
(Citrus x Aurantium)



SHILAJIT



SPIRULLINA
(Arthrospira Platensis)



ECHINICHEA
(Echinacea Purpurea)



PEPPERMINT
(Mentha x piperita)



GRAPE SEED EXTRACT



HERBAL BEADLETS



NATURAL HEALING



STABILISES METABOLISM



HEALING PROPERTY



STRENGTH IN IMMUNE SYSTEM

Red clever Beadlets 65%

Green Tea Beadlets 75%

Spirulina Beadlets 75%
(Arthrospira platensis)

Rhodiola rosea Beadlets 65%
(Golden Root)

Bioperine Beadlets 75%
(black paper)

Yahimbine HCL Beadlets 65%

Lemon Balm Extract Beadlets 75%
(Melissa officinalis)

Dandelion Root Extract Beadlets 65%

Yohimbe bark extract Beadlets 65%
(Pausinystalia Johimbe)

Mucuns Pruriens Beadlets 75%
(Mucuna Pruriens)

Valerian Beadlets 65%
(Valeriana officinalis)

Chamomile Extract Beadlets 65%

White Willow Bark Extract Beadlets 65%

Bitter orange fruit extract Bedalets 65%

Pappermint Beadlets %
(Mentha x piperita)

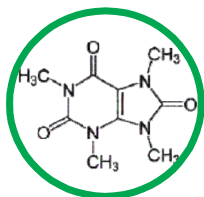
Grape Seed Extract Beadlets 65%

Rosemary Beadlets 65%
(Rosmarinus officinalis)

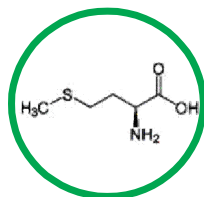
Ylang Ylang Beadlets 65%
(Cananga odorata)



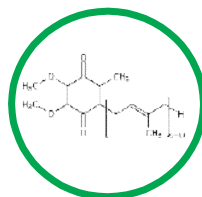
ENCAPSULATED ACTIVES



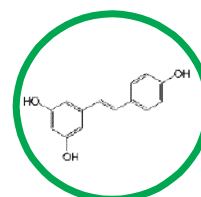
L-THEACRINE



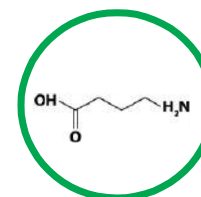
L-METHIONINE



CoQ10

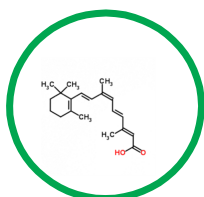


ROSEVERATROL

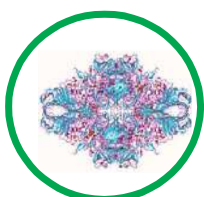


GABA

ENCAPSULATED ENZYMES



PANCREATIN



LACTASE



LIPASE



PROTEASE

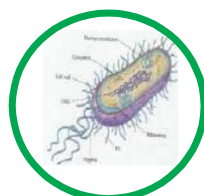


AMYLASE

ENCAPSULATED PROBIOTICS



BIFIDOBACTERIUM
THERMOPHILUM



LACTOBACILLUS
ACIDOPHILUS



ENTEROCOCCUS
FAECIUM



BACILLUS PUMILUS



ACTIVES/ ENZYMES /PROBIOTICS BEADLETS



INCREASES ENERGY

L-theacrine Beadlets 45%

L-methionine Beadlets 45%

coq10 Beadlets 10%

Roseveratrol Beadlets 65%

GABA Beadlets 65%

Pancreatin Beadlets 90%

Lactase Beadlets 85%

Lipase Beadlets 85%

Protease Beadlets 85%

Amylase Beadlets 85%

Benfotiamine Beadlets 55%

Caffeine Beadlets 65%,85%

17

Gamma Linolenic Acid Beadlets 25%

L-Methyl Folate Beadlets 15%

Alpha -Lipoic Acid Beadlets 80%

Omega-3 Beadlets



IMPROVE MENTAL HEALTH



STABILISES METABOLISM



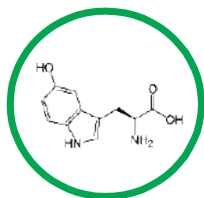
IMPROVE DIGESTION



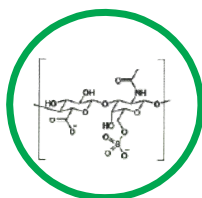
STRENGTH IN IMMUNE SYSTEM



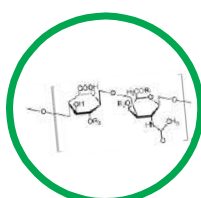
SPECIALITY ACTIVES



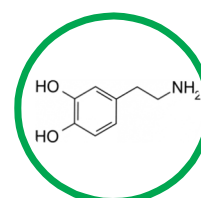
5- HTP



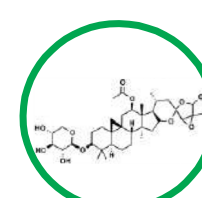
BEEN POLLEN



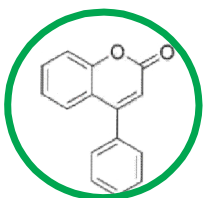
CHONDROITIN SULFATE



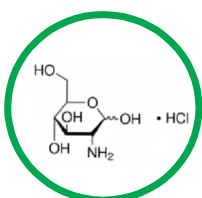
FISH OIL



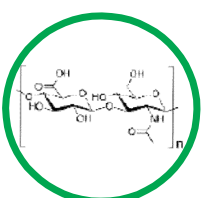
BLACK COHOSH



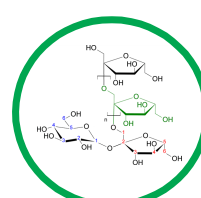
FLAVONOIDS



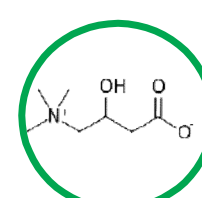
GLUCOSAMINE



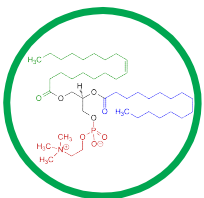
HYALURONIC ACID



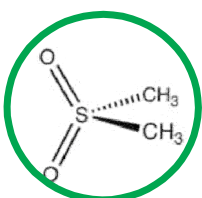
INULIN



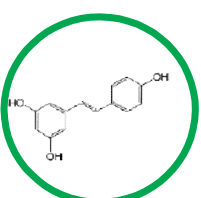
L-CARNITINE



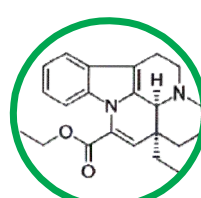
LECITHIN



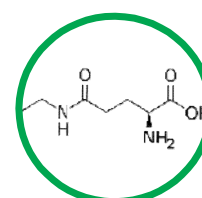
MSM



RESVERATROL



VINPOCTINE



L-THEANINE



SPECIALITY ACTIVES



NATURAL HEALING



STABILISES METABOLISM



HEALING PROPERTY



STRENGTH IN IMMUNE SYSTEM

